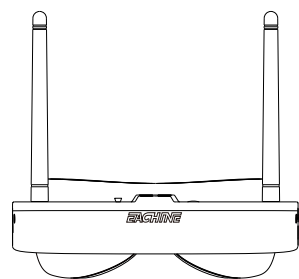




Eachine EV100 NEW 5.8G FPV Goggles



White/Black
User Manuals

Product Contents

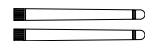
Eachine EV100
Goggles *1



Battery*1



Antenna*2



USB data cable*1



Lens wiping cloth*1

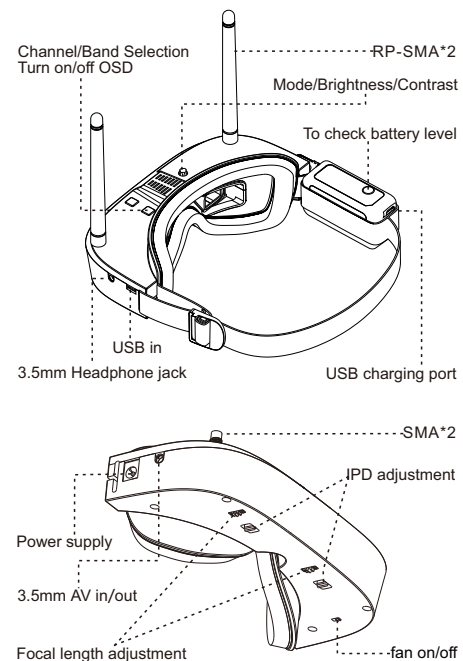


User Manuals*1



1

Controls Diagram

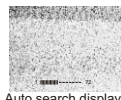


2

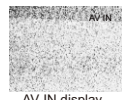
Controls

Mode/Brightness/Contrast control

Mode : a. **Debug mode:** Press "mode" button and power on, enter debug mode (5300MHz).
 b. **Racing mode:** Long press "mode" button until first beep to switch mode from 4 pilots/6 pilots/8 pilots. For example: 4 pilots/6 pilots/8 pilots/exit racing mode switching circularly.
 c. **Auto search:** Long press "mode" button until second beep to enter auto search.
 d. **Turn on/off RX:** Long press "mode" button until third beep to enter AV IN (RX OFF).



Auto search display



AV IN display

Brightness: Pressing forward/back increases/decreases display brightness. (32 level contrast for the LCD display, default level 28)

Contrast: Pressing left/right decreases/increases display contrast. (32 level contrast for the LCD display, default level 28)

Channel/Band select

Channel: short Press channel up/down buttons will cause the channel to incrementally increase/decrease from channels 1 to 8 (refer to frequency table).

Band : Press channel up/down buttons 3s will cause the band to incrementally increase/decrease from band A to H (refer to frequency table).

Turn on/off OSD: Press channel up/down buttons simultaneously to turn on/off OSD.

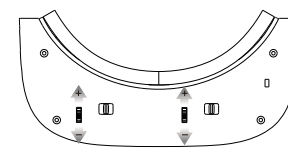
Low battery warning: Buzzer warning if input voltage drops below 6.8V.

Turn on/off fan

3

Focal Length Adjustment

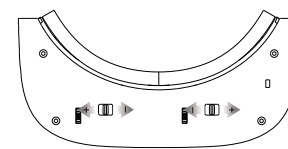
Adjustable focal length is perfect for myope under 400 degree and hyperope under 100 degree.



Thumbwheel is used to adjust focal length. (+) means to increase diopter, (-) means to decrease diopter.

IPD Adjustment

Independent control for both sides, adjust the range of 58 - 68mm.



Slider is switch to adjust IPD. (+) means to increase IPD, (-) means to decrease IPD.

4



www.eachine.com

AV In/Out

3.5mm AV Connector



AV input & output
Support external HDMI to AV input
Support external DVR.

USB In

•For firmware upgrading.

•Alternative power supply.
If multiple power sources are supplied at same time (Like: power Bank and head strap battery)the goggles will draw power from the highest voltage.

Mode

In this mode, the best results can be achieved by using the supporting vtx.

Racing Mode

3 Racing Mode: 4/6/8 pilots
60-80MHz interval between adjacent channels greatly decrease interference.

Debug Mode

Press "mode" button first and then powering on goggles, enter debug mode (5300MHz). Requires a corresponding vtx which support pitmode and extra frequency 5300MHz.

5

Battery

Li-Po BATTERY PACK

7.4V 1000mAh(7.4Wh) with LED indicator
(One charging indicator light, one power-checking button and four power indicator lights)

It can simultaneously power the external DVR.
Made in china

Battery charging

Charge max rate of 1C(DC connector)
USB charging with approved adapter
(USB: 5V=1.5A or 2A)

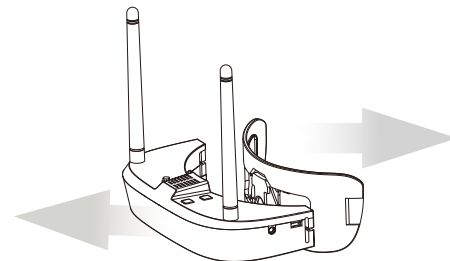
It is not recommended to charge the battery via PC USB, since the insufficient current will damage the battery.

WARNING

Do not open the battery case
Never leave batteries near fire or high temperatures
Battery may balloon or catch fire if faulty or improperly charged
Never leave a charging battery unattended
Do not use if signs of failure

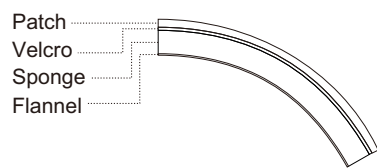
6

Detachable Patch



Snap joint assemblies allows easy replacement and maintenance

Replaceable sponge



Using Velcro as a bridge, sponge and flannel can be easily replaced, and Velcro can be used for a long time.

7

Product specifications

FOV: 28°Diagonal
Type: Plastic optic module
IPD: 58 to 68 mm (adjustable)
Focal length : Under 400 degree of myopia and Hyperopia 100 degree (adjustable)

Display: Resolution : 720*540
NTCS/PAL auto selecting
User Controls: Channel/Band selection
Mode selection (debug/racer)
Contrast/ brightness control
Turn on/off RX/fan/OSD

Battery: 7.4V,1000mAh Li-po battery with LED indicator
Can power the external DVR

Interface: 3.5mm AV in/out port
Power in port
3.5mm stereo earphone port
USB in port

Accessories: Lens wiping cloth
USB data cable
5.8G RP-SMA male antenna*2
7.4V, 1000mAh Li-po battery with LED indicator

Operation temperature : -10C°-40C°
Frequency: 5.8GHZ 5333—5945MHZ
Sensitivity: ≤-93DB
Dimensions: 165*76*30mm
Weight(not included battery): 180g
Packaging: 235*120*70mm

8

Band & Frequency table

Unit:MHZ								
Band	CH1	CH2	CH3	CH4	CH5	CH6	CH7	CH8
Band-A	5865	5845	5825	5805	5785	5765	5745	5725
Band-b	5733	5752	5771	5790	5809	5828	5847	5866
Band-E	5705	5685	5665	5645	5885	5905	5925	5945
Band-F	5740	5760	5780	5800	5820	5840	5860	5880
Band-r	5658	5695	5732	5769	5806	5843	5880	5917
Band-U	5325	5348	5366	5384	5402	5420	5438	5456
Band-o	5474	5492	5510	5528	5546	5564	5582	5600
Band-L	5333	5373	5413	5453	5493	5533	5573	5613
Band-H	5653	5693	5733	5773	5813	5853	5893	5933

Racing mode frequency

4 pilots	5695	5769	5843	5917				
6 pilots	5533	5613	5705	5785	5865	5945		
8 pilots	5528	5582	5645	5705	5765	5825	5885	5945

OSD display

Regular mode:

Display values like: Band-r CH1 5658MHz
(refer to frequency table)

Racing mode:

Mode	Status description
RACER4	RACER4-1
RACER6	RACER6-2
RACER8	RACER8-8

9

Trouble Shooting

No image, display is completely dark

•No power supplied. Check power connections.

No image, display is glowingdark grey

•If using wireless module, ensure RX is working.
•If using AV in cable, check video source.
•Ensure TX is on and camera connections solid
•Ensure lens cap is removed from camera

Complete white screen

•LCD driver has failed and needs to be replaced under warranty. Contact your retailer.

Short range

•Ensure 5.8Ghz antenna were installed.

10

157G铜版纸黑白正反印刷折页
折叠尺寸:110*70mm
展开尺寸:420*110mm